

Provider Directory

May 2026



To make a referral or place orders, visit ochsnerproviderconnect.org. Call the Ochsner Clinic Concierge at 855-312-4190 or fax 504-842-8416.

 **Ochsner**
Lafayette General

Table of Contents

Anesthesia	1	Pain Management	24
Breast Radiology	3	Palliative Care Clinic	24
Cardiovascular and Thoracic Surgery	4	Pediatric Medicine	25
Endocrinology	5	Physical Medicine and Rehabilitation	26
General and Bariatric Surgery	6	Plastic Surgery	27
Genetics (Testing and Counseling)	7	Primary Care	28
Hematology/Oncology	8	Psychiatry and Mental Health	34
Imaging Locations	10	Rheumatology	34
Infectious Disease	12	Sleep Medicine	35
Interventional Radiology/Interventional Neurology	13	Support Services	36
Lab Locations	14	Surgical Oncology	40
Maternal-Fetal Medicine	15	Therapies	42
Nephrology	16	Trauma	43
Neurology	17	Vascular Surgery	44
Neurosurgery	19	Women's Health	45
Orthopedics	20	Wound Care/Hyperbaric Clinic	47
Other Services (UHC)	23		

Anesthesia

Locations	Phone	Locations	Phone
1 Lafayette General Medical Center 1214 Coolidge St, Lafayette, LA 70503	337-289-7991	5 Ochsner University Hospital & Clinics 2390 W Congress St, Lafayette, LA 70506	337-289-7991
2 Ochsner Acadia General Hospital 1305 Crowley Rayne Hwy, Crowley, LA 70526	337-783-3222	6 Ochsner Abrom Kaplan Memorial Hospital 110 W 7th St, Kaplan, LA 70548	337-643-8300
3 Ochsner American Legion Hospital 1634 Elton Rd, Jennings, LA 70546	337-616-7000	7 Ochsner Abrom Kaplan Memorial Hospital 1310 W 7th St, Kaplan, LA 70548	337-643-5334
4 Ochsner Lafayette General Surgical Hospital 1000 W Pinhook Rd, Lafayette, LA 70503	337-571-0607	8 Ochsner St. Martin 210 Champaigne Blvd, Breaux Bridge, LA 70517	337-332-2178

Anesthesia



Brian Batdorf, MD
Anesthesia
1



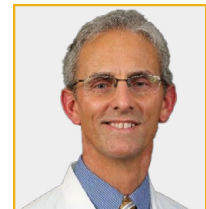
Bryan Baudoin, MD
Anesthesia
2



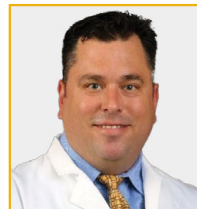
Julie Broussard, MD
Anesthesia
1



Nathaniel Duhon, MD
Anesthesia
1



Kerwin Fontenot, MD
Anesthesia
1



Michel Heard, MD
Anesthesia
1



Crystal Jackson, MD
Anesthesia
5



Kenneth Levine, MD
Anesthesia
1



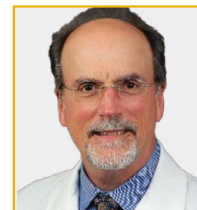
Cherie Many, MD
Cardiac Anesthesia
1



George Mampilly, MD
Anesthesia
1



Laurie McCormic, MD
Anesthesia
5



Richard Palfrey, MD
Anesthesia
1

Anesthesia cont.



Adam Samuel, MD
Anesthesia
1



George Semien, MD
Cardiac Anesthesia
1



Leo Verlander, MD
Anesthesia
1



Marc Villien, MD
Anesthesia
1



Richard Villien, MD
Anesthesia
1

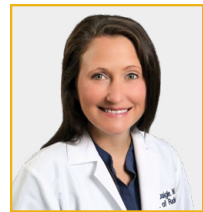
Anesthesia - CRNAs

- | | | |
|----------------------------|------------------------------|----------------------------|
| 2 Kentry Adams, CRNA | 1 Amber Faulk, CRNA | 3 Michael Marceaux, CRNA |
| 1 Billy Anderson, CRNA | 6 Tommy Fontenot, CRNA | 2 Andrew McFarlain, CRNA |
| 4 William Barnhill, CRNA | 2 Benjamin Fontenot, CRNA | 4 Megan Neatherlin, CRNA |
| 1 Alexis Batiste, CRNA | 5 Jeffry Gaspard, CRNA | 1 Tawni Neu, CRNA |
| 1 Zachary Bergeron, CRNA | 1 Caroline Horton, CRNA | 1 Lydia Nauck, CRNA |
| 1 Morgan Bristo, CRNA | 1 Jeffrey Johnson, CRNA | 5 Joseph Olivier, CRNA |
| 5 Kayla Brubaker, CRNA | 6 Micki Kieta, CRNA | 1 Nicholas Patin, CRNA |
| 1 Kelly Broussard, CRNA | 4 Janet Lapointe, CRNA | 1 Byron "Terry" Rue, CRNA |
| 3 Kent Caraway, CRNA | 4 Aleisha LaCour, CRNA | 1 Christopher Savoie, CRNA |
| 1 Drew Carlin, CRNA | 1 Lantz Lafluer, CRNA | 1 Daniel Simar, CRNA |
| 1 Cameron Chappuis, CRNA | 1 Courtney LeBlanc, CRNA | 5 Ronni Smith, CRNA |
| 4 Katherine Chachere, CRNA | 4 Julie LeBlanc, CRNA | 1 Steven Stewart, CRNA |
| 1 Virginia Dabadie, CRNA | 4 Yvette LeBlanc, CRNA | 1 Katelyn Thibodeaux, CRNA |
| 1 Simone Doucet, CRNA | 2 Deron Lewis, CRNA | 1 Chelsea Torrence, CRNA |
| 1 Stephen Dupuis, CRNA | 2 Rick Levy, CRNA | 1 Laken Tujague, CRNA |
| 5 Tracy Fabre, CRNA | 4 Nicole Luent-Sonnier, CRNA | 1 Tyler Vizier, CRNA |

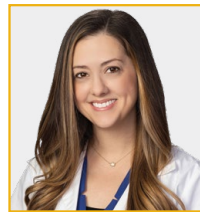
Breast Radiology

Locations	Epic Department Name	Phone	Fax
1 Ochsner Lafayette General Breast Center 1448 S. College Road, Lafayette, LA 70503	OLGH BREAST CENTER MAMMOGRAPHY	337-571-0496	337-289-7075
2 Ochsner University Hospital & Clinics 2390 W. Congress Street, Lafayette, LA 70506	ULGH MAMMOGRAPHY	337-571-0496	337-289-7075
3 Ochsner St. Martin Hospital 210 Champagne Blvd., Breaux Bridge, LA 70517	STMH MAMMOGRAPHY	337-571-0496	337-289-7075
4 Ochsner Abrom Kaplan Memorial Hospital 1310 W. 7th Street, Kaplan, LA 70548	AKMH MAMMOGRAPHY	337-571-0496	337-289-7075
5 Ochsner Acadia General Hospital 1305 Crowley Rayne Hwy, Crowley, LA 70526	AGHH MAMMOGRAPHY	337-571-0496	337-289-7075
6 Ochsner American Legion Hospital 1634 Elton Road, Jennings, LA 70546	OALH MAMMOGRAPHY	337-571-0496	337-289-7075

Breast Radiology



Megan Daigle, MD
Breast Radiology
1 2 3 4 5 6



Megan Fitzpatrick, MD
Breast Radiology
1 2 3 4 5 6



Jamie Joseph, MD
Breast Radiology
1 2 3 4 5 6



Kirk Langheinz, MD
Breast Radiology
1 2 3 4 5 6

Cardiovascular and Thoracic Surgery

Locations	Epic Department Name	Phone	Fax
1 Ochsner Lafayette General Medical Center 155 Hospital Drive, Ste. 201, Lafayette, LA 70503	OLGC CARDIOVASCULAR SURGERY SUITE 201	337-289-7999	337-289-7998

Cardiovascular and Thoracic Surgery

Procedure Type: Ambulatory Referral/Consult to Cardiovascular Surgery or Cardiothoracic Surgery



Mohamad Allam, MD
Cardiovascular and Thoracic Surgery
1



Jade Arrant, PA
Cardiovascular and Thoracic Surgery
1



Jennifer Block, PA
Cardiovascular and Thoracic Surgery
1



John Hendrick, PA
Cardiovascular and Thoracic Surgery
1



Sarah Navarre, NP
Cardiovascular and Thoracic Surgery
1



Matt Landry, NP
Cardiovascular and Thoracic Surgery
1

Endocrinology

Locations	Epic Department Name	Phone	Fax
1 Ochsner Lafayette General Medical Center 1211 Coolidge Street, Ste. 203, Lafayette, LA 70503	OLGC BRACC ENDOCRINOLOGY	337-703-6383	337-703-6384
2 Ochsner University Hospital & Clinics 2390 W. Congress Street, Lafayette, LA 70506	ULGC ENDOCRINOLOGY	337-261-6480	337-261-6416

Endocrinology

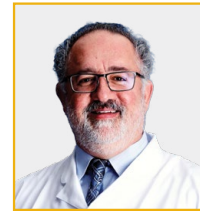
Procedure Type: Ambulatory
Referral/Consult to Endocrinology



Meghana Pattipati, MD
Endocrinology
1



Khaled Qaisieh, NP
Endocrinology
2



Khaled Qaisieh, NP
Endocrinology
2

General and Bariatric Surgery

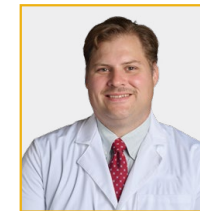
Locations	Epic Department Name	Phone	Fax
1 Ochsner Lafayette General Surgical Hospital 1000 W. Pinhook Road, Ste. 310, Lafayette, LA 70503	OLGC GENERAL AND BARIATRIC SURGERY	337-233-9900	337-233-0770

Nurse Navigators

Provider Name & Title	Specialty	Phone
1 Jessica Carpenter, RN	General/Bariatric Surgery	337-233-9900
1 Doralis Lejuene, RN	General/Bariatric Surgery	337-233-9900

General/Bariatric Surgery

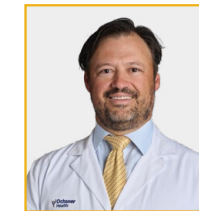
Procedure Type: Ambulatory Referral/Consult to Weight Management Program or Bariatric/Obesity Medicine or Bariatric Surgery or General Surgery



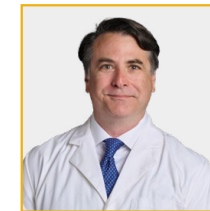
Robert Autin, MD
General/Bariatric Surgery
1



Lindsey Bruno, MD
General/Bariatric Surgery
1



Dennis Eschete, MD
General/Bariatric Surgery
1



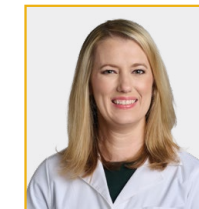
Philip Gachassin, MD
General/Bariatric Surgery
1



Simon Peter Tiu, MD
General Surgery
1



Courtney LaFleur, NP
General/Bariatric Surgery
1



Lauren Naquin, NP
General/Bariatric Surgery
1



Brooke McIntyre, NP
General/ Bariatric Surgery & Weight Management
1

Genetics (Testing and Counseling)

Locations	Epic Department Name	Phone	Fax
1 Ochsner Lafayette General Medical Center 1211 Coolidge Street, Ste. 100, Lafayette, LA 70503	OLGC BRACC HEMATOLOGY ONCOLOGY	337-289-8400	337-289-8583
2 Ochsner Lafayette General Medical Center 1448 S. College Road, Lafayette, LA 70503	OLGC BREAST CENTER BREAST SURGERY	337-571-0496	337-289-7075

Genetics

Procedure Type: Ambulatory Referral/Consult to Genetics



Rebecca Donohue, NP
Genetics

1



Jamiri Jennings, CGC
Genetics

2

Hematology/Oncology

Locations	Epic Department Name	Phone	Fax
1 Ochsner Lafayette General Medical Center 1211 Coolidge Street, Ste. 100, Lafayette, LA 70503	OLGC BRACC HEMATOLOGY ONCOLOGY	337-289-8400	337-289-8583
2 Ochsner Acadia General Hospital 1305 Crowley Rayne Hwy, Crowley, LA 70526	AGHC LGH HEMATOLOGY ONCOLOGY	337-788-6545	337-788-6205
3 Ochsner Cancer Center of Acadiana New Iberia 2309 E. Main Street, Ste. 200, New Iberia, LA 70560	NIMC HEMATOLOGY ONCOLOGY	337-608-9902	337-608-9905
4 Ochsner University Hospital & Clinics 2390 W. Congress Street, Lafayette, LA 70506	ULGC HEMATOLOGY ONCOLOGY	337-261-6545	337-261-6550

Nurse Navigators

Provider Name & Title	Specialty	Phone
1 Oneika Mercier	Lung/Mass	337-289-8777
4 Peggy Prejean	Hematology/Oncology	337-261-6545
1 Rebekah Trampel	Hematology/Oncology	337-289-8404
2 Julia Lee	Hematology/Oncology	337-788-6545
1 Aubrey Brand	Hematology/Oncology	337-289-8413

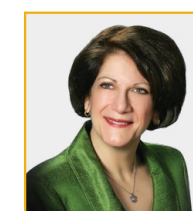
Hematology/Oncology

Procedure Type: Ambulatory Referral/Consult to Hematology/Oncology or Oncology



Sudhir Aggarwal, MD
Hematology/Oncology

4



Paulette Blanchet, MD
Hematology/Oncology

3



Michael Cain, MD
Hematology/Oncology

1



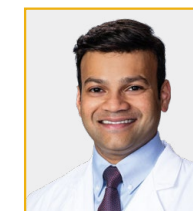
Nowell Ganey, MD
Hematology/Oncology

2 4



Elizabeth LeJeune, MD
Hematology/Oncology

1 2



Hemendra Mhadgut, MD
Hematology/Oncology

3



Victoria Panelli, MD
Hematology/Oncology

1 2



Philippe Prouet, MD
Hematology/Oncology

1

[Back to table of contents](#)

[Back to table of contents](#)



Steven Saccaro, MD
Hematology/Oncology

1



Molly Thomas, MD
Hematology/Oncology

1



Taylor Arceneaux, NP
Hematology/Oncology

1



Allison Bertrand, NP
Hematology/Oncology

1



Tracie DuBose, NP
Hematology/Oncology

1



Shantell Dugas, NP
Hematology/Oncology

1



Amy Falgout, NP
Hematology/Oncology

2



Emily Levy, NP
Hematology/Oncology

1



Arielle Landry, NP
Hematology/Oncology

1 2 4



Dena Lowe, NP
Hematology/Oncology

3



Natalie McCall, NP
Hematology/Oncology

3



Maresa Mathers, NP
Hematology/Oncology

1



Laura Popeck, NP
Hematology/Oncology

2



Ryan Skyrme, NP
Hematology/Oncology

1



Danielle Stevenson, NP
Hematology/Oncology

4



Kellie West, NP
Hematology/Oncology

1

Locations	Epic Department Name	Phone	Fax
Abrom Kaplan Memorial Hospital 1310 West 7th Street Kaplan, LA 70548	1 AKMH CT SCAN	337-643-5277	337-643-5230
	2 AKMH ECHOCARDIOGRAPHY		
	3 AKMH MAMMOGRAPHY		
	4 AKMH NUCLEAR MEDICINE		
	5 AKMH ULTRASOUND		
	6 AKMH XRAY		
Acadia General Hospital 1305 Crowley Rayne Highway Crowley, LA 70526	1 AGHH CT SCAN	337-788-6584	337-788-6437
	2 AGHH MAMMOGRAPHY		
	3 AGHH MRI		
	4 AGHH NUCLERA MEDICINE		
	5 AGHH ULTRASOUND		
	6 AGHH XRAY		
St. Martin Hospital 210 Champagne Boulevard Breaux Bridge, LA 70517	1 STMH BONE MINERAL DENSITY	337-507-1244	337-909-6180
	2 STMH CARDIOLOGY DIAGNOSTICS		
	3 STMH CT SCAN		
	4 STMH MAMMOGRAPH		
	5 STMH MRI		
	6 STMH NUCLEAR MEDICINE		
	7 STMH ULTRASOUND		
	8 STMH XRAY		
American Legion Hospital 1634 Elton Road Jennings, LA 70546	1 OALH CARDIOLOGY DIAGNOSTICS	337-616-7190	337-616-7197
	2 OALH CT SCAN		
	3 OALH MAMMOGRAPHY		
	4 OALH MRI		
	5 OALH NUCLEAR MEDICINE		
	6 OALH ULTRASOUND		
	7 OALH XRAY		
University Hospital and Clinics 2390 West Congress Street Lafayette, LA 70506	1 ULGH CT SCAN	337-261-6244	337-261-6769
	2 ULGH INTERVENTIONAL RADIOLOGY		
	3 ULGH MAMMOGRAPHY		
	4 ULGH MRI		
	5 ULGH NUCLEAR MEDICINE		
	6 ULGH ULTRASOUND		
	7 ULGH XRAY		
Lafayette General Imaging 1214 Coolidge Avenue Lafayette, LA 70503	1 OLGH BRACC CT SCAN IMAGING CENTER	337-289-8231	337-289-7075
	2 OLGH BRACC MRI IMAGING CENTER		
	3 OLGH BRACC PET CT IMAGING CENTER		
	4 OLGH BRACC ULTRASOUND IMAGING CENTER		
	5 OLGH BRACC XRAY IMAGING CENTER		

Locations	Epic Department Name	Phone	Fax
Lafayette General Medical Center 1214 Coolidge Avenue Lafayette, LA 70503	1 OLGH CARDIOLOGY DIAGNOSTICS	337-289-7970	337-289-7342
	2 OLGH CT SCAN		
	3 OLGH ELECTROENCEPHALOGRAPHY		
	4 OLGH INTERVENTIONAL RADIOLOGY		
	5 OLGH MRI		
	6 OLGH NUCLEAR MEDICINE		
	7 OLGH ULTRASOUND		
	8 OLGH XRAY		
Lafayette General Orthopaedic Hospital 2810 Ambassador Caffery Parkway Lafayette, LA 70506	1 LGOH CT SCAN	337-989-6730	337-989-6732
	2 LGOH ECHOCARDIOGRAPHY		
	3 LGOH MRI		
	4 LGOH ULTRASOUND		
	5 LGOH XRAY		
Lafayette General Surgical Hospital 1000 West Pinhook Road Lafayette, LA 70503	1 LGSH XRAY	337-289-8032	337-289-7075
Acadiana Imaging Services (Kaliste Saloom) 1025 Kaliste Saloom Road Suite 101 Lafayette LA 70508	1 LKSC ULTRASOUND	337-703-6400	337-703-6430
	2 LKSC XRAY		
	3 LKSC MRI		
	4 LKSC CT SCAN		
Acadiana Imaging Services (Broussard) 1122 South Bernard Road Suite A Broussard LA 70518	1 BSBC MAMMOGRAPHY	337-703-6400	337-703-6430
	2 BSBC XRAY		
	3 BSBC ULTRASOUND		
	4 BSBC MRI		
	5 BSBC CT SCAN		

Locations	Epic Department Name	Phone	Fax
1 Ochsner Lafayette General Medical Center 155 Hospital Drive, Ste. 100, Lafayette, LA 70503	OLGC INFECTIOUS DISEASE	337-703-3390	337-703-3399
2 Ochsner University Hospital & Clinics 2390 W. Congress Street, Lafayette, LA 70506	ULGC INFECTIOUS DISEASE	337-261-6480	337-266-4806

Infectious Disease

Procedure Type: Ambulatory Referral/Consult to Infectious Disease



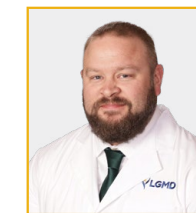
Marvi Mahar, MD
Infectious Disease
1



Jishna Shrestha, MD
Infectious Disease
1



Emilie Boudreaux, NP
Infectious Disease
2



Charles "Michael" Fitch, NP
Infectious Disease
1



Jacqueline Henson, NP
Infectious Disease
2



Kinsley Poppa, NP
Infectious Disease
1



Mandy Rainey, NP
Infectious Disease
2

Interventional Radiology/Interventional Neurology

Locations	Epic Department Name	Phone	Fax
1 Ochsner Lafayette General Medical Center 134 Hospital Drive, Ste. 201, Lafayette, LA 70503	OLGC NEUROSCIENCE SUITE 201	337-289-8282	337-289-8283
2 Ochsner Lafayette General Medical Center 1211 Coolidge Street, Ste. 203, Lafayette, LA 70503	OLGC BRACC INTERVENTIONAL RADIOLOGY	337-703-6383	337-703-6384
3 Ochsner University Hospital & Clinics 2390 W. Congress Street, Lafayette, LA 70506	ULGC INTERVENTIONAL RADIOLOGY	337-703-6383	337-703-6384

Interventional Radiology

Procedure Type: Ambulatory Referral/Consult to Interventional Radiology



Kyle Degeyter, MD
Interventional Radiology

2 3

Vascular/Interventional Neurology

Procedure Type: Ambulatory Referral/Consult to Interventional Radiology



Mohammad Almajali, MD
Interventional Neurology

1



Shail Thanki, MD
Vascular/Interventional Neurology

1

Lab Locations

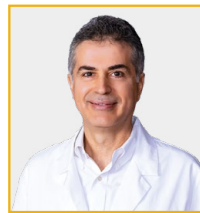
Locations	Epic Department Name	Phone	Fax
1 Ochsner Abrom Kaplan Memorial Hospital 1310 West 7th Street Kaplan, LA 70548	AKMH LABORATORY	337-643-5275	337-643-5283
2 Ochsner Acadia General Hospital 1305 Crowley Rayne Highway Crowley, LA 70526	AGHH LABORATORY	337-788-6590	337-788-6596
3 Ochsner St. Martin Hospital 210 Champagne Boulevard Breaux Bridge, LA 70517	STMH LABORATORY	337-507-1241	337-332-5951
4 Ochsner American Legion Hospital 1634 Elton Road Jennings, LA 70546	OALH LABORATORY	337-616-7170	337-616-7173
5 Ochsner University Hospital and Clinics 2390 West Congress Street Lafayette, LA 70506	ULGH LABORATORY	337-261-6228	337-261-6211
6 Ochsner Lafayette General Medical Center 1214 Coolidge Avenue Lafayette, LA 70503	OLGH LABORATORY	337-289-7671	337-289-7672
7 Ochsner Lafayette General Orthopaedic Hospital 2810 Ambassador Caffery Parkway Lafayette, LA 70506	LGOH LABORATORY	337-989-6747	337-989-6704
8 OLGH BRACC LABORATORY DRAW STATION 1214 Coolidge Avenue Lafayette, LA 70503	OLGH BRACC LABORATORY DRAW STATION	337-289-8000 opt. 3	337-289-7075

Maternal-Fetal Medicine (High-Risk Pregnancy)

Locations	Epic Department Name	Phone	Fax
1 Ochsner Lafayette General Surgical Hospital 1000 W. Pinhook Road, Ste. 305, Lafayette, LA 70503	OLGC OCHSNER MATERNAL FETAL MEDICINE	337-443-6070	337-443-6071
2 Ochsner Health Center - Corporate Boulevard 105 Corporate Blvd., Lafayette, LA 70508	LADC MATERNAL FETAL MEDICINE	337-593-9099	337-769-8509
3 Ochsner Health Center – Opelousas 3975 I-49 S. Service Road, Ste. 205A, Opelousas, LA 70570	LODC MATERNAL FETAL MEDICINE	337-942-1151	337-678-3339

Maternal-Fetal Medicine

Procedure Type: Ambulatory Referral/Consult to Perinatology/Maternal-Fetal Medicine



Paul Dibbs, MD
Maternal-Fetal Medicine
2 3



Katie Vignes, MD
Maternal-Fetal Medicine
1



Abigail Douet, NP
Maternal-Fetal Medicine
2 3



Fallon Guidry, NP
Maternal-Fetal Medicine
1



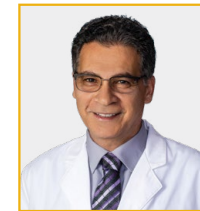
**Chelsea McGee
Walley, NP**
Maternal-Fetal Medicine
2 3

Nephrology

Locations	Epic Department Name	Phone	Fax
1 Ochsner Lafayette General Nephrology Center 1460 S. College Blvd., Lafayette, LA 70503	OLGC NEPHROLOGY	337-703-6431	337-703-6432
2 Ochsner University Hospital & Clinics 2390 W. Congress Street, Lafayette, LA 70506	ULGC NEPHROLOGY	337-261-6759	337-261-6795

Nephrology

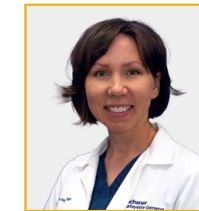
Procedure Type: Ambulatory Referral/Consult to Nephrology



Ziad Ashkar, MD
Nephrology
1



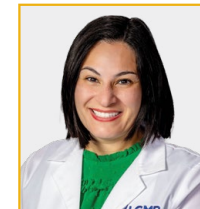
Precious Hodges, NP
Nephrology
1



Yelena Magay, NP
Nephrology
2



Austin Thomas, NP
Nephrology
1

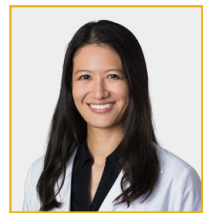


Maryanne Sourial, DO
Nephrology
1

Locations	Epic Department Name	Phone	Fax
1 Ochsner Lafayette General Medical Center 134 Hospital Drive, Ste. 101, Lafayette, LA 70503	OLGC NEUROSCIENCE SUITE 101	337-289-8282	337-289-8283
2 Ochsner Lafayette General Medical Center 134 Hospital Drive, Ste. 201, Lafayette, LA 70503	OLGC NEUROSCIENCE SUITE 201	337-289-8282	337-289-8283
3 Ochsner Lafayette General Medical Center 134 Hospital Drive, Ste. 201, Lafayette, LA 70503	OLGC SLEEP LAB	337-289-8282	337-237-5185
4 Ochsner Lafayette General Medical Center 136 Hospital Drive, Ste. 100, Lafayette, LA 70503	OLGC NEUROSCIENCE SUITE 100	337-289-8282	337-289-8283
5 Ochsner Lafayette General Medical Center 155 Hospital Drive, Ste. 303, Lafayette, LA 70503	OLGC NEUROSCIENCE SUITE 303	337-289-8282	337-289-8283
6 Ochsner University Hospital & Clinics 2390 W. Congress Street, Lafayette, LA 70506	ULGC NEUROLOGY	337-261-6759	337-261-6795
7 Ochsner University Hospital & Clinics 2390 W. Congress Street, Lafayette, LA 70506	ULGH SLEEP LAB	337-266-4841	337-261-6706

Neurology

Procedure Type: Ambulatory Referral/Consult to Neurology



Tiffany Liu, MD
Neurology

6



Anna Faulk, NP
Neurology

1



Lisa Miller, NP
Neurology

6

Neurology/Neurophysiology

Procedure Type: Ambulatory Referral/Consult to Neurology



Virginia Kellner, MD
Neurology/Neurophysiology

1

Neurology/Sleep Medicine

Procedure Type: Ambulatory Referral/Consult to Neurology



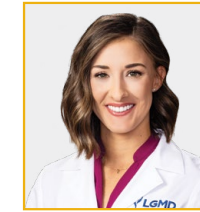
Adam Foreman, MD
Neurology/Sleep Medicine

3 5 7



Kevin Hargrave, MD
Neurology/Sleep Medicine

3 4



Lindsey Landreneau, NP
Neurology/Sleep Medicine

3 4



Kimberly Riche, NP
Neurology/Sleep Medicine

3 4



Jeremy Terro, NP
Neurology/Sleep Medicine

3 4



Kira Weber, NP
Neurology/Sleep Medicine

3 5

Vascular/Interventional Neurology

Procedure Type: Ambulatory Referral/Consult Neurology



Mohammad Almajali, MD
Interventional Neurology

1



Alicia Nicklas, NP
Vascular/Interventional Neurology

2



Shail Thanki, MD
Vascular/Interventional Neurology

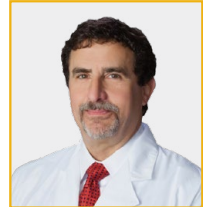
2

Neurosurgery

Locations	Epic Department Name	Phone	Fax
1 Ochsner Lafayette General Medical Center 155 Hospital Drive, Ste. 301, Lafayette, LA 70503	OLGC NEUROSURGERY	337-235-7743	337-235-7614

Neurosurgery

Procedure Type: Ambulatory Referral/Consult to Neurosurgery



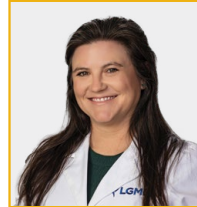
Alan Appley, MD
Neurosurgery

1



Saul Morales, MD
Neurosurgery

1



Tracy Herpin, NP
Neurosurgery

1



Jeanne Kaliszkeski, NP
Neurosurgery

1



Lana Luong, NP
Neurosurgery

1

Orthopedics

Locations	Epic Department Name	Phone	Fax
1 Ochsner Health Center – Broussard 1122 S. Bernard Road, Broussard, LA 70518	BSBC ORTHOPEDICS	337-703-3201	337-703-3202
2 Ochsner St. Martin Hospital Community Health Clinic 220 Champagne Blvd. Breaux Bridge, LA 70517	STMC 220 ORTHOPEDICS	337-703-3201	337-703-3202
3 Ochsner University Hospital & Clinics 1100 Bertrand Dr, Lafayette, LA 70506	UBDC ORTHOPEDICS	337-261-8510	337-261-6125
4 Ochsner Lafayette General Orthopedic Hospital 4212 W. Congress Street, Ste. 3100, Lafayette, LA 70506	LGOC MOB ORTHOPEDICS	337-703-3201	337-703-3202
5 Primary Care Clinic of Kaplan 711 N. Montgomery Avenue, Kaplan, LA 70548	KPMC ORTHOPEDICS	337-703-3201	337-703-3202
6 Ochsner Health Center - Pont Des Mouton 409 W Pont Des Mouton Rd, Ste C Lafayette, LA 70507	LPMC SPORTS MEDICINE	337-703-3201	337-703-3202

Nurse Navigators

Provider Name & Title	Specialty	Phone
4 Nancy Guidry, RN	Total Joint/General	337-703-3259

General Orthopedics

Procedure Type: Ambulatory Referral/Consult to Orthopedics or Sports Medicine



Adam Kennedy, MD
General Orthopedics

2 3 4



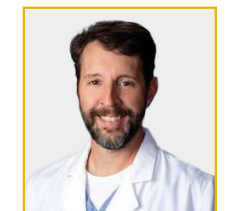
Al Granger, MD
General Orthopedics

3



Madison Bolgiano, PA
General Orthopedics

2 4



Todd Devalcourt, PA
General Orthopedics

3 4

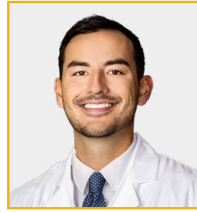
Primary Care Sports Medicine

Procedure Type: Ambulatory Referral/Consult to Orthopedics or Sports Medicine



Steven Arnold, MD
Primary Care
Sports Medicine

4



Christopher Tosino, DO
Primary Care
Sports Medicine

4 6

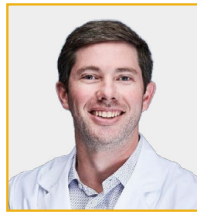
Sports Medicine/General Orthopedics

Procedure Type: Ambulatory Referral/Consult to Orthopedics or Sports Medicine



Otis Drew, MD
Sports Medicine/General

3 4



Brian Etier, MD
Sports Medicine/General

3 4



Paul Williams, MD
Sports Medicine/General

3 4 5



Caroline Bouy, NP
Sports Medicine/General

4



Trisha Durand, PA
Sports Medicine/General

4



Adrienne Molony, NP
Sports Medicine/General

3 4

Total Joint/General Orthopedics

Procedure Type: Ambulatory Referral/Consult to Orthopedics or Sports Medicine



Paul Buzhardt, MD
Total Joint/General

3 4



Scott Yerger, MD
Total Joint/General

3 4



Jason Manafi, PA
Total Joint/General

3 4

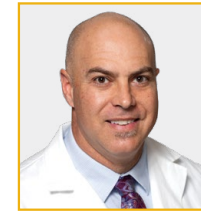


Rebecca Wilke, NP
Sports Medicine/General

3 4

Pediatrics/General Orthopedics

Procedure Type: Ambulatory Referral/Consult to Orthopedics or Sports Medicine



Ryan Farmer, MD
Pediatric Surgery

4

Orthopedic Trauma

Procedure Type: FPO



Blaine Walton, MD
Orthopedic Trauma

4



Blake Saul, DO
Orthopedic Trauma

4



Ashley Gunther, PA
Orthopedic Trauma

4



Whitney Halamuda, NP
Orthopedic Trauma

4

Other Services (UHC)

Locations	Epic Department Name	Phone	Fax
1 Ochsner University Hospital & Clinics 2390 W. Congress Street, Lafayette, LA 70506	ULGC OTORHINOLARYNGOLOGY	337-261-6415	337-261-6416
2 Ochsner University Hospital & Clinics 2390 W. Congress Street, Lafayette, LA 70506	ULGC ENDOCRINOLOGY	337-261-6480	337-261-6416
3 Ochsner University Hospital & Clinics 2390 W. Congress Street, Lafayette, LA 70506	ULGC GASTROENTEROLOGY	337-261-6759	337-261-6795
4 Ochsner University Hospital & Clinics 2390 W. Congress Street, Lafayette, LA 70506	ULGC UROLOGY	337-261-6580	337-261-6416
5 Ochsner University Hospital & Clinics 401 St. Julian Ave. Lafayette, LA 70506	USJC OPHTHALMOLOGY	337-262-2500	337-262-2506
6 Ochsner University Hospital & Clinics 2390 West Congress St. Lafayette, LA 70506	ULGC PULMONOLOGY	337-261-6759	337-261-6795

Otorhinolaryngology

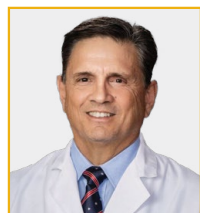
Procedure Type: Ambulatory
Referral/Consult to Otorhinolaryngology



Ashley Dees, NP
Otorhinolaryngology
1

Urology

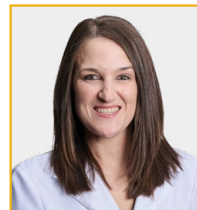
Procedure Type: Ambulatory
Referral/Consult to Urology



John Dartez, NP
Urology
4

Gastroenterology

Procedure Type: Ambulatory
Referral/Consult to Gastroenterology



Jade Doucet, NP
Gastroenterology
3

Pain Management

Locations	Epic Department Name	Phone	Fax
1 Ochsner Lafayette General Surgical Hospital 1000 W. Pinhook Road, Ste. 304, Lafayette, LA 70503	LGSC PAIN MEDICINE	337-703-4481	337-703-4484
2 ULGC Interventional Pain Medicine 2390 W. Congress St. Lafayette, LA 70506	ULGC INTERVENTIONAL PAIN MEDICINE	337-261-6759	337-261-6756

Interventional Pain

Procedure Type: Ambulatory Referral/Consult to Interventional Pain



Keri Copponex, MD
Interventional Pain
1



Gautam Sharma, MD
Interventional Pain
1 2



David Bourgeois, NP
Interventional Pain
1

Palliative Care Clinic

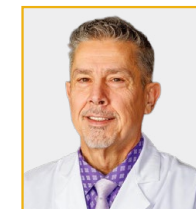
Locations	Epic Department Name	Phone	Fax
1 Ochsner Lafayette General Medical Center 1211 Coolidge Street, Ste. 404, Lafayette, LA 70503	OLGC OP PALLIATIVE MEDICINE	337-769-2531	337-769-2532

Palliative Medicine

Procedure Type: Ambulatory Referral/Consult to CLINIC Palliative Care



Brady Guillory, MD
Palliative Medicine
1



Mark Gaudet, NP
Palliative Medicine
1



Marissa Gregoire, NP
Palliative Medicine
1



Katlyn LaGrange, NP
Palliative Medicine
1

Palliative Care Clinic Cont.

Palliative Medicine

Procedure Type: Ambulatory Referral/Consult to CLINIC Palliative Care



Elaine Waguespack, NP
Palliative Medicine

1

Pediatric Medicine Cont.

Pediatrics

Procedure Type: Ambulatory Referral/Consult to Pediatrics



Kathryn Diaz, NP
Pediatrics

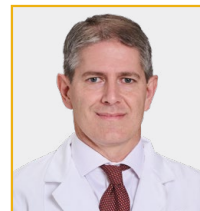
1

Pediatric Medicine

Locations	Epic Department Name	Phone	Fax
1 Ochsner University Hospital & Clinics 4212 W. Congress Street, Ste. 1403, Lafayette, LA 70506	LGOC MOB PEDIATRICS	337-703-3360	337-703-3361
2 Ochsner Health Center – Eunice 3256 Highway 190, Ste. B, Eunice, LA 70535	EHCC PEDS	337-603-6010	337-466-7040
3 Ochsner Health Center – Jennings 1322 Elton Road, Ste. F, Jennings, LA 70546	JERC FAMILY MEDICINE	337-824-1111	337-824-1122

Pediatrics

Procedure Type: Ambulatory Referral/Consult to Pediatrics



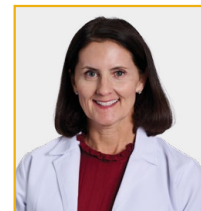
Michael Benoit, MD
Pediatrics/Family

3



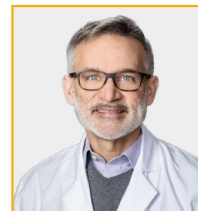
Kate Degatur, MD
Pediatrics

1



Charice Hebert, MD
Pediatrics

2



Todd Pullin, MD
Pediatrics Medicine

2

Physical Medicine and Rehabilitation

Locations	Epic Department Name	Phone	Fax
1 Ochsner Lafayette General Medical Center 136 Hospital Drive, Ste. 100, Lafayette, LA 70503	OLGC NEUROSCIENCE SUITE 100	337-289-8282	337-571-0899

Physical Medicine and Rehabilitation

Procedure Type: Ambulatory Referral/Consult to Neurology



Koby Lanclos, MD
Physical Medicine/Rehabilitation

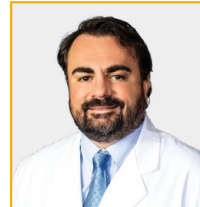
1

Plastic Surgery

Locations	Epic Department Name	Phone	Fax
1 Plastic & Reconstructive Surgery of Acadiana 900 E. St. Mary Blvd., Ste. 104, Lafayette, LA 70503	OLGC PLASTIC SURGERY (Referral Must Be Faxed)	337-703-4481	337-504-3640

Plastic Surgery

Procedure Type: Ambulatory Referral/Consult to Plastic Surgery (must fax)



Joseph Lupo, MD
Plastic Surgery

1



Leah Trahan, NP
Plastic Surgery

1

Primary Care

Locations	Epic Department Name	Phone	Fax
1 Family Health Physicians of Youngsville 103 Centre Sarcelle Blvd. Ste. 506	YCSC PRIMARY CARE	337-451-4890	337-451-4896
2 Ochsner Health Center – Broussard 1122 S. Bernard Road, Ste. C, Broussard, LA 70518	OLGC EXECUTIVE CARE	337-703-6476	337-703-6477
3 Ochsner Health Center – Rue Louis XIV 121 Rue Louis XIV, Bldg. 6, Lafayette, LA 70508	LRLC PRIMARY CARE	337-703-6540	337-269-7495
4 Ochsner Lafayette General Community Health Center 1317 Jefferson Street, Lafayette, LA 70501	LJFC FAMILY MEDICINE	337-703-6500	337-703-6501
5 Ochsner Acadia General Health Center Crowley 1325 Wright Avenue, Ste. H, Crowley, LA 70526	CWAC FAMILY MEDICINE	337-785-5440	337-785-5441
6 Kaplan Family Medicine 1402 W. 8th Street, Kaplan, LA 70548	KWEC FAMILY MEDICINE	337-285-6033	337-285-3622
7 Ochsner University Hospital & Clinics 2390 W. Congress Street, Lafayette, LA 70506	ULGC FAMILY MEDICINE	337-261-6570	337-261-6264
8 Ochsner Health Center – Pont Des Mouton 409 W. Pont Des Mouton Road, Ste. B, Lafayette, LA 70507	CPMC FAMILY MEDICINE	337-806-1525	337-806-1526
9 Ochsner Health Center – Maurice 4402 U.S. Highway 167, Maurice, LA 70555	MPFC PRIMARY CARE	337-516-3117	337-516-3118
10 Ochsner Health Center – Cordoba 4906 Ambassador Caffery Pkwy, Ste. 1302, Bldg. M, Lafayette, LA 70508	LACC FAMILY MEDICINE	337-534-8964	337-222-3934
11 Comprehensive Family Care 502 Lafayette Street, Youngsville, LA 70592	YLSC FAMILY MEDICINE	337-857-3512	337-857-3513
12 St. Martinville Family Medicine 508 E. Bridge Street, St. Martinville, LA 70582	MVBC FAMILY MEDICINE	337-342-2706	337-342-2708
13 Primary Care Clinic of Kaplan 707 N. Montgomery Avenue, Kaplan, LA 70548	KMGC FAMILY MEDICINE	337-643-6219	337-643-6230
14 Primary Care Clinic of Kaplan 802 N. Monceaux Avenue, Kaplan, LA 70548	KAPC FAMILY MEDICINE	337-643-5375	337-285-3622
15 Primary Care Physicians 1027-A Martin Street, Parks, LA 70582	PMSC PRIMARY CARE	337-845-4900	337-845-5288
16 Ochsner Health Center – Broussard 1122 S. Bernard Road, Ste. B, Broussard, LA 70518	BSBC PRIMARY CARE	337-703-6456	337-703-6457
17 Ochsner University Hospital & Clinics 1100 Bertrand Dr, Lafayette, LA 70506	UBDC INTERNAL MEDICINE	337-261-8546	337-261-6197
18 Southside Family Health Physicians 4212 W. Congress Street, Ste. 1600, Lafayette, LA 70506	LGOC MOB FAMILY MEDICINE	337-456-1642	337-456-4913
19 Ochsner Lafayette General Internal Medicine 457 Heymann Blvd., Lafayette, LA 70503	OLGC 457 INTERNAL MEDICINE	337-289-8816	337-289-8817
20 Ochsner Lafayette General Internal Medicine 459 Heymann Blvd., Lafayette, LA 70503	OLGC 459 INTERNAL MEDICINE	337-289-8974	337-289-8975
21 Ochsner Lafayette General Internal Medicine 461 Heymann Blvd., Lafayette, LA 70503	OLGC 461 INTERNAL MEDICINE ACADIANA	337-289-8717	337-289-8718

Locations	Epic Department Name	Phone	Fax
23 Ochsner Lafayette General Internal Medicine 461 Heymann Blvd., Lafayette, LA 70503	OLGC 461 INTERNAL MEDICINE ASSOCIATES	337-289-8415	337-289-8718
24 Gardiner Center Health Clinic – An Ochsner Abrom Kaplan Memorial Hospital Campus 710 5th Street, Gueydan, LA 70542	GGCC FAMILY MEDICINE	337-536-9262	337-536-9263
25 Ochsner Health Center – Eunice 3256 Highway 190, Ste. B, Eunice, LA 70535	EHCC FAMILY MEDICINE	337-603-6010	337-466-7040
27 Ochsner Health Center – Jennings 1322 Elton Road, Ste. F, Jennings, LA 70546	JERC FAMILY MEDICINE	337-824-8868	337-824-1122
28 Ochsner Health Center – Lake Arthur 328 Kellogg Avenue, Lake Arthur, LA 70549	LAKC FAMILY MEDICINE	337-774-0100	337-774-0111
29 Ochsner St. Martin Hospital Community Health Clinic 1555 Gary Drive, Ste. C, Breaux Bridge, LA 70517	STMC FAMILY MEDICINE	337-909-2460	337-909-2469
30 Ochsner Health Center – Welsh 107 S. Elm Street, Welsh, LA 70591	WESC FAMILY MEDICINE	337-616-7389	337-734-0510

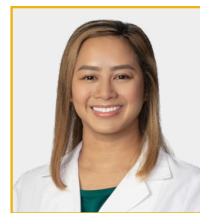
Family Medicine

Procedure Type: Ambulatory Referral/Consult to Family Medicine



Christopher J. Achee, MD
Family Medicine

27



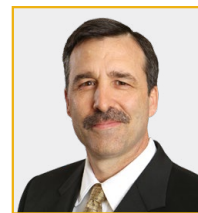
Stefanie Acosta, MD
Family Medicine

3



Michael Benoit, MD
Family Medicine

27



Scott Bergeaux, MD
Family Medicine

13



Shalini Choudhary, MD
Family Medicine

10



Mary Curet, MD
Family Medicine

12



Indira Gautam, MD
Family Medicine

11



Chad Manuel, MD
Family Medicine

3

Family Medicine cont.

Procedure Type: Ambulatory Referral/Consult to Family Medicine



Fallon McManus, MD
Family Medicine

2



James E. McNally, MD
Family Medicine

27



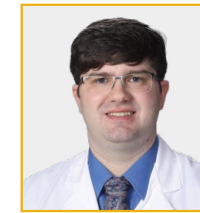
Camtu Nguyen, MD
Family Medicine

1



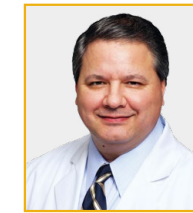
Cassandra Pillette, MD
Family Medicine

10



Quinn Quebodeaux, DO
Family Medicine

6



Pernell Simon, MD
Family Medicine

1



Marae Schexnayder, DO
Family Medicine

18



Michelle Taylor, MD
Family Medicine

18



Krista Balius, NP
Family Medicine

10



Jill Breaux, NP
Family Medicine

27



Faye Bryant, NP
Family Medicine

4



Laci Byrne, NP
Family Medicine

27



Christi Carmouche, NP
Family Medicine

29



Lori Cox, NP
Family Medicine

5



Kathryn Duplantis, NP
Family Medicine

12



Ka'Ryn Franklin, NP
Family Medicine

8

Family Medicine cont.

Procedure Type: Ambulatory Referral/Consult to Family Medicine



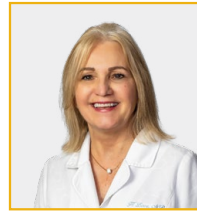
Christa Helaire, NP
Family Medicine

18



Deana Knighten, NP
Family Medicine

27



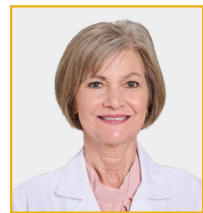
Helen Love, NP
Family Medicine

24



Nancy Miller, NP
Family Medicine

28



Tina Monlezun, NP
Family Medicine

28



Jeslyn Orgain, NP
Family Medicine

25



Cheramie Rami, NP
Family Medicine

29



Chanda Babineaux, NP
Family Medicine

18



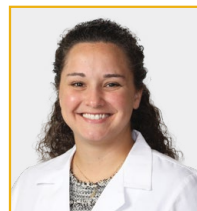
Lani Landry, PA
Family Medicine

3



Dawn Rosteet, NP
Family Medicine

30



Emily Trahan, NP
Family Medicine

13



Kadie Verret, NP
Family Medicine

28



Kelly Whitehead, NP
Family Medicine

27

Internal Medicine

Procedure Type: Ambulatory Referral/Consult to Internal Medicine



Michael Alexander, MD
Internal Medicine

21



Reshma Bhanushali, MD
Internal Medicine

19



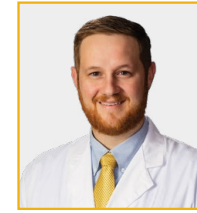
Bradley Chastant II, MD
Internal Medicine

21



Debra Durham, MD
Internal Medicine

15



Jeffrey Fontenot, MD
Internal Medicine

16



Madelaine Fontenot, MD
Internal Medicine

16



Daniela Leon-Jarrin, MD
Internal Medicine

23



Kenneth McCarron, MD
Internal Medicine

19



Juan Perez, MD
Internal Medicine

21



Tyler Perrin-Bellelo, MD
Internal Medicine

20



Angela Snow, MD
Internal Medicine

21



Thomas Voitier II, MD
Internal Medicine

23



Tina Boudreaux, NP
Internal Medicine

17



Lauren Breaux, NP
Internal Medicine

17



Shanna Burrell, NP
Internal Medicine

17

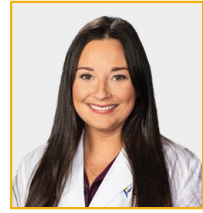


Alisa Butler, NP
Internal Medicine

17

Internal Medicine cont.

Procedure Type: Ambulatory Referral/Consult to Internal Medicine



Kiley Caletri, NP
Internal Medicine
17



Amy Duplechain, NP
Internal Medicine
17



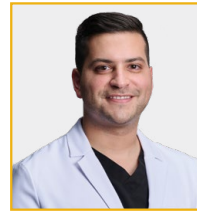
Marissa Guidry, NP
Internal Medicine
21



Lena Handy, NP
Internal Medicine
17



Morgan Louviere, FNP-C
Internal Medicine
1 16 9



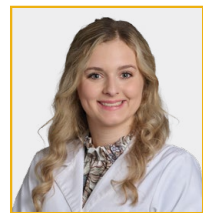
Enrique Mayes, NP
Internal Medicine
19



Courtney Mankin, NP
Internal Medicine
20



Katie Stonicher, NP
Internal Medicine
19



Alyce Toups, PA
Internal Medicine
16

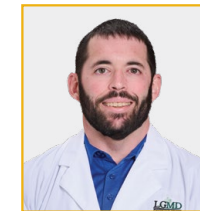


Shante Washington, NP
Internal Medicine
17

Locations	Epic Department Name	Phone	Fax
1 Ochsner Health Center – Jennings 1322 Elton Road, Ste. F, Jennings, LA 70546	JERC BEHAVIORAL HEALTH	337-824-8868	337-824-8829
2 Ochsner Lafayette General Community Health Center 1317 Jefferson Street, Lafayette, LA 70501	LJFC BEHAVIORAL HEALTH	337-703-6500	337-703-6501

Mental Health

Procedure Type: Ambulatory Referral/Consult to Outpatient Mental Health



Christopher Arceneaux, NP
1

Psychiatry

Procedure Type: Ambulatory Referral/Consult to Outpatient Mental Health



Kathleen Boudreaux, NP
Psychiatry
2

Rheumatology

Locations	Epic Department Name	Phone	Fax
1 Ochsner Lafayette General Medical Center 1211 Coolidge Street, Ste. 203, Lafayette, LA 70503	OLGC BRACC RHEUMATOLOGY	337-703-6383	337-703-6384
2 Ochsner University Hospital & Clinics 2390 W. Congress Street, Lafayette, LA 70506	ULGC RHEUMATOLOGY	337-261-6759	337-261-6795

Rheumatology

Procedure Type: Ambulatory Referral/Consult to Rheumatology



Supraja Yeturi, MD
Rheumatology
2



Pavana Sakhamuri, MD
Rheumatology
1 2



Sarah Kirkpatrick, NP
Rheumatology
1



Amanda Perrodin, NP
Rheumatology
2

Sleep Medicine

Locations	Epic Department Name	Phone	Fax
1 Ochsner Lafayette General Medical Center 134 Hospital Drive, Ste. 201, Lafayette, LA 70503	OLGC SLEEP LAB	337-289-8282	337-237-5185
2 Ochsner University Hospital & Clinics 2390 W. Congress Street, Lafayette, LA 70506	ULGH SLEEP LAB	337-266-4841	337-261-6706

Sleep Medicine

Sleep Lab – Ambulatory Referral/Consult to Sleep Disorders



Adam Foreman, MD
Sleep Medicine

1 2



Kevin Hargrave, MD
Sleep Medicine

1



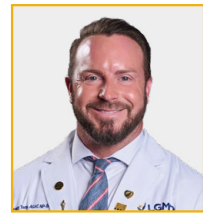
Lindsey Landreneau, NP
Neurology/Sleep Medicine

1



Kimberly Riche, NP
Neurology/Sleep Medicine

1



Jeremy Terro, NP
Neurology/Sleep Medicine

1



Kira Weber, NP
Neurology/Sleep Medicine

1

Support Services

Locations	Epic Department Name	Phone	Fax
1 Ochsner Lafayette General Medical Center 1211 Coolidge Street, Lafayette, LA 70503	OLGH BRACC COUMADIN	337-289-7557	337-534-4454
2 MTS Physical Therapy and Wellness 4212 W. Congress Street, Ste. 3600, Lafayette, LA 70506	N/A	337-981-9182	337-988-3441
3 MTS Physical Therapy and Wellness Townhouse 111 Pasa Place, Lafayette, LA 70503	N/A	337-981-9182	337-856-1818
4 MTS Physical Therapy and Wellness – Dulles 2115 Dulles Drive, Lafayette, LA 70506	N/A	337-981-9182	337-856-1818
5 MTS Physical Therapy and Wellness 201 W. Gloria Switch Road, Lafayette, LA 70507	N/A	337-981-9182	337-856-1818
6 MTS Physical Therapy and Wellness 4402 Highway 167, Ste. B, Maurice, LA 70555	N/A	337-981-9182	337-856-1818
7 MTS Physical Therapy and Wellness Youngsville 302 Lafayette Street, Bldg. B, Youngsville, LA 70592	N/A	337-981-9182	337-856-1818
8 MTS Physical Therapy and Wellness Breux Bridge 1400 Rees Street, Ste. D, Breux Bridge, LA 70517	N/A	337-981-9182	337-322-5537
9 Ochsner Lafayette General Orthopedic Hospital 4212 W. Congress Street, Ste. 1850, Lafayette, LA 70506	LGOC OCHSNER MOB SMOKING CESSATION	337-703-4878	504-842-1292
10 Ochsner Lafayette General Community Health Center 1317 Jefferson Street, Lafayette, LA 70501	LJSC SMOKING CESSATION	337-703-6514	504-842-1292

Locations	Epic Department Name	Phone	Fax
11 Ochsner Lafayette General Orthopedic Hospital 4212 W. Congress Street, Lafayette, LA 70506	LGOC MOB DIABETES CARE AND EDUCATION	504-842-0075	337-504-5044
12 Ochsner University Hospital & Clinics 2390 W. Congress Street, Lafayette, LA 70506	ULGC FAMILY MEDICINE DIABETES CARE AND EDUCATION	504-842-0075	N/A
13 Ochsner Lafayette General Community Health Center 1317 Jefferson Street, Lafayette, LA 70501	LJFC DIABETES CARE AND EDUCATION	504-842-0075	504-842-1292
14 Ochsner University Hospital & Clinics 2390 W. Congress Street, Lafayette, LA 70506	ULGH NUTRITION	337-261-6113	N/A
15 Ochsner Lafayette General Medical Center 1211 Coolidge St. Lafayette, LA 70503	OLGC BRACC HEMATOLOGY ONCOLOGY AND ULGC HEMATOLOGY ONCOLOGY	337-289-8400	337-289-8583
16 MTS St Martin Hospital 225 Champagne Boulevard Breaux Bridge, LA 70517	STMH REHAB OUTPATIENT SERVICES	337-442-6506	337-442-6555
17 MTS Abrom Kaplan Memorial Hospital 1310 W. Seventh St. Kaplan, LA 70548	AKMH REHAB OUTPATIENT SERVICES	337-643-5312	337-643-5317

Coumadin Clinic

Ambulatory Referral/Consult to Anticoagulation Monitoring (PHARMACIST MANAGED)



COUMADIN, OLGH BRACC
Coumadin Clinic

1

Nutrition

Nutrition/Dietitian - Ambulatory Referral/Consult to Nutritional Services



AMB Referral / Consult to Nutrition Services

Nutrition

14

Diabetes Education

Ambulatory Referral/Consult to Diabetes Education



Jenifer Ransonet, RN
Diabetes Education

11



Adrienne Guidry, Registered Dietitian
Diabetes Education

12 13

Smoking Cessation

Ambulatory Referral/Consult to Smoking Cessation Program



Kimberly Goody-Richard, CTTS
Smoking Cessation

9



Tiffany Mouton
Smoking Cessation

10

Oncology Behavioral Therapy

Ambulatory Referral/Consult to Oncology Behavioral Therapy



Jamie Sonnier, LCSW
Oncology Behavioral Therapy

15

Locations	Epic Department Name	Phone	Fax
1 Ochsner Lafayette General Medical Center 1211 Coolidge Street, Ste. 301, Lafayette, LA 70503	OLGC BRACC 301 SURGICAL ONCOLOGY	337-703-6390	337-703-6391
2 Ochsner Lafayette General Breast Center 1448 S. College Blvd., Lafayette, LA 70503	OLGC BREAST CENTER BREAST SURGERY	337-571-1300	337-571-1301
3 Ochsner University Hospital & Clinics 2390 W. Congress Street, Lafayette, LA 70506	ULGC BREAST SURGERY	337-261-6580	337-261-6585

Nurse Navigators

Provider Name & Title	Specialty	Phone	Fax
2 Joyce Bellow	Breast Surgical Oncology	337-571-1351	N/A
2 Jan Masson	Breast Surgical Oncology	337-571-1312	N/A
1 Sydney Vela	Colorectal Surgical Oncology	337-703-6398	N/A
1 Rebecca Blanker	General Surgical Oncology	337-703-6392	N/A
1 Connie Joseph	General Surgical Oncology	337-703-6392	N/A

Breast Surgical Oncology

Ambulatory Referral/Consult to Breast Surgery



Markell Ayo, NP
Breast Surgical Oncology - High Risk

3



Shaunda Grisby, MD
Breast Surgical Oncology

1 2 3



Mandy Maness, MD
Breast Surgical Oncology

1 2 3



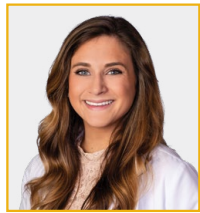
Tasha Martin, MD
Breast Surgical Oncology

1 2 3



Megan Darby, PA
Breast Surgical Oncology

2



Rachel Trepagnier, PA
Breast Surgical Oncology

2

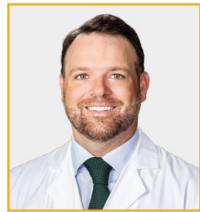
General Surgical Oncology

Ambulatory Referral/Consult to Surgical Oncology



Jason Breaux, MD
General Surgical Oncology

1



Patrick McLaren, MD
Surgical Oncology

1

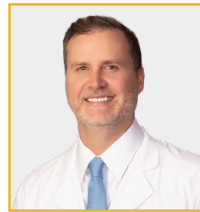


Sydney Weaver, NP
General Surgical Oncology

1

Colorectal Surgical Oncology

Ambulatory Referral/Consult to Surgical Oncology



Michael Horaist, MD
Colorectal Surgical Oncology

1



Emily Boudreaux, NP
Colorectal Surgical Oncology

1

Locations	Services	Phone	Fax
1 MTS Therapy and Wellness at Dulles 2115 Dulles Drive Lafayette, LA 70506		337-981-9182	337-988-3441
2 MTS Therapy and Wellness at Coolidge 902 Coolidge Street, Lafayette LA 70503	(Physical Therapy and Pelvic Health)	337-571-1200	337-571-1230
3 MTS Therapy and Wellness at Youngsville 302 Lafayette Street Building B		337-856-1717	337-856-1818
4 Ochsner St. Martin Hospital Specialty Center 225 Champagne Boulevard Breaux Bridge, LA 70517	(Physical, Occupational and Speech Therapy)	337-442-6506	337-442-6555
5 Ochsner Abrom Kaplan Memorial Hospital 1310 West 7th Street Kaplan, LA 70548	(Physical, Occupational and Speech Therapy)	337-643-5312	337-643-5317
6 MTS Therapy and Wellness at OLG Ortho Hospital 4212 West Congress Street, Suite 1900, Lafayette, LA 70506	(Physical, Occupational and Hand Therapy)	337-703-3270	337-703-3271
7 OLG Sports Performance 4212 West Congress Street, Suite 1900, Lafayette, LA 70506		337-703-3269	
8 MTS Therapy and Wellness @ Carencro 201 West Gloria Switch Road Suite H, Lafayette, LA 70507		337-233-8080	337-237-1623
9 MTS Therapy and Wellness @ Rees Street 1400 Rees Street Suite D Breaux Bridge, LA 70517		337-442-6077	337-442-1224
10 MTS Therapy and Wellness @ Maurice 4402 US HWY 167 Suite B Maurice, LA 70555		337-516-3160	337-516-3161
11 Ochsner University and Hospital Clinics Outpatient Center 1100 Bertrand Dr, Lafayette, LA 70506-4110	(Physical, Occupational and Speech Therapy)	337-261-8530	337-261-8531

Trauma

Locations	Epic Department Name	Phone	Fax
1 Ochsner Lafayette General Medical Center 110 Hospital Dr Lafayette, LA 70503	OCHSNER LAFAYETTE GENERAL MEDICAL CENTER	337-769-2540	N/A

Nurse Navigators

Provider Name & Title	Specialty	Phone	Fax
1 Stephanie Castille, RN	Total Joint/General	337-769-2540	N/A

Trauma



Damian DeFranchesch, MD
Internal Medicine
1



Williard Mosier, MD
Internal Medicine
1



Rebecca Sanders, MD
Internal Medicine
1

Trauma - Advanced Practice Providers

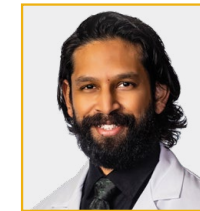
- 1 Jordan Arcenceaux, NP
- 1 Jacqueline Venable, NP
- 1 Kelsey Whitney, NP

Vascular Surgery

Locations	Epic Department Name	Phone	Fax
1 Ochsner Health Center – Southern Vascular 5000 Ambassador Caffery, Bldg. 1, Ste. 100, Lafayette, LA 70508	OLGC VASCULAR SURGERY	337-534-4444	337-534-4454

Interventional Nephrology

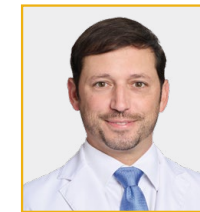
Procedure Type: Ambulatory Referral/Consult to Vascular Surgery



Shamir Hasan, DO
Interventional Nephrology
1

Vascular Surgery

Procedure Type: Ambulatory Referral/Consult to Vascular Surgery



Racheed Ghanami, MD
Vascular Surgery
1



Joshua Sibille, MD
Vascular Surgery
1



Morgan Johnson, PA
Vascular Surgery
1

Locations	Epic Department Name	Phone	Fax
1 Ochsner Acadia General Health Center Crowley 1325 Wright Avenue, Ste. H, Crowley, LA 70526	CWAC GYNECOLOGY AND OBSTETRICS	337-785-5440	337-785-5441
2 Ochsner Health Center – Eunice 3256 Highway 190, Ste. B, Eunice, LA 70535	EHCC OBGYN	337-550-3740	337-550-3742
3 Ochsner Health Center – N. State Street 805 N. State Street, Jennings, LA 70546	JSSC OBSTETRICS AND GYNECOLOGY	337-824-6150	337- 824-3143
4 Ochsner Lafayette General Medical Center 1310 W. 7th Street, Kaplan, LA 70548	OLGC BRACC OCHSNER GYN ONCOLOGY	337-769-9860	N/A
5 Ochsner University Hospital & Clinics 2390 W. Congress Street, Lafayette, LA 70506	ULGC GYNECOLOGY	337-261-6584	337-261-6147
6 Ochsner Lafayette General Medical Center 155 Hospital Dr. Suite 205, Lafayette, LA 70503	OLGC OCHSNER GYN ONCOLOGY SUITE 205	337-769-9860	337-769-9661

Gynecology

Procedure Type: Ambulatory Referral/Consult to Gynecology



Kelly Czerwinski, NP
Gynecology

5



Kimberly Jourdan, NP
Gynecology

5



Ava Raymond, NP
Gynecology

5

Gynecologic Oncology

Procedure Type: Ambulatory Referral/Consult to OB/GYN or Gynecology



Syem Barakzai, MD
Gynecologic Oncology

6



David Barrington, MD
Gynecologic Oncology

6



Chad Hamilton, MD
Gynecologic Oncology

6

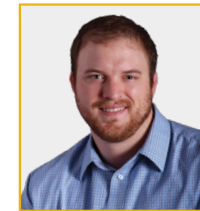


Nina LeBlanc, PA
Gynecologic Oncology

6

Obstetrics and Gynecology

Procedure Type: Ambulatory Referral/Consult to OB/GYN or Gynecology



Joel Bailey, MD
Obstetrics and Gynecology

3



Krystle Baker, MD
Obstetrics and Gynecology

3



Donald W. Barnes, MD
Obstetrics and Gynecology

2



Amy Hulsey, WHNP-BC
Obstetrics and Gynecology

1 3



Tanya Holmes, NP
Obstetrics and Gynecology

2



Shelley LeBlanc, WHNP-C
Obstetrics and Gynecology

3

Urogynecology

Procedure Type: Ambulatory Referral/Consult to Urogynecology



Laurephile Desrosiers, DO
Urogynecology



Leise Knoepp, MD
Urogynecology

6

Wound Care/Hyperbaric Clinic

Locations	Epic Department Name	Phone	Fax
1 Ochsner Acadia General Health Center - Crowley 1325 Wright Ave Suite G, Crowley, LA 70526	CWAH OUTPATIENT WOUND CARE	337-788-2014	N/A
2 Ochsner Lafayette General 1211 Coolidge Blvd, Lafayette, LA 70503	OLGH OUTPATIENT WOUND CARE	337-289-7198	N/A
3 Ochsner St. Martin Hospital 1555 Gary Drive Suite A, Breaux Bridge, LA 70517	STMC OUTPATIENT WOUND CARE	337-909-2474	N/A
4 Ochsner University Hospital & Clinics 2390 W. Congress Street, Lafayette, LA 70506	ULGH OUTPATIENT WOUND CARE	337-261-6089	N/A

Wound Care

Procedure Type: Wound Care/Hyperbarics – Ambulatory Referral/Consult to Wound Clinic



Chris Fontenot, MD
Wound Care
4



Rochelle Duplechin, MD
Wound Care
2



Danielle Fuselier, MD
Wound Care
1



Gregory Glowaki, MD
Wound Care
3



Leslie Greco, MD
Wound Care
2



Ronald Menard, MD
Wound Care
1



Luris Sanchez, MD
Wound Care
3



Kerry Thibodeaux, MD
Wound Care
3

Wound Care - Advanced Practice Providers

- 3 Brandi Darbonne, NP
- 1 Patricia Milford, NP
- 4 Julie Nicholas, NP

